

SUMMARY

HA (Hydroxyapatite) Coating is a thin dense coating made using atmospheric plasma spray process that can be applied on:

- Ti6AL4V, Ti6AL4V Eli, CoCr and SS substrate materials.
- Typical coating thickness is from 25 – 75 μm .

CHARACTERISTICS

HA coating is white in color and has a smooth surface topography. Images 1 and 2 show shows the SEM images showing HA coating cross-section and topography.

TYPICAL PROPERTIES

The properties of HA coating are listed below in the table 1. These properties are typical expected values and may vary based on coating specification.

TABLE I
HA Coating Characteristics

Tensile (psi)	>7400 psi
Thickness (inches)	25 – 75 μm
Crystallinity	>62%
% HA	>90%

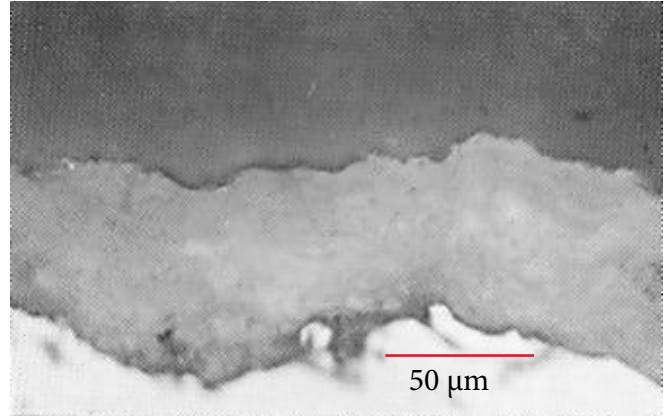


Figure 1: HA coating is white in color and has a smooth surface topography

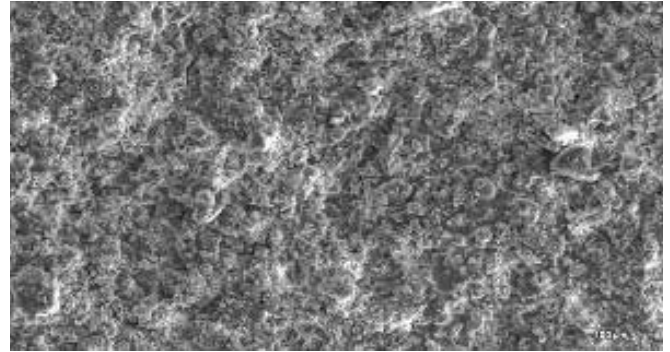


Figure 2: HA is a thin dense coating made using atmospheric plasma spray



Figure 3: HA coating applied to acetabular cups.